



RECON CONTROL PANELS

With Telemetry and Expandable I/O Options

MODEL: 2000 AND 2000T



RECON2000

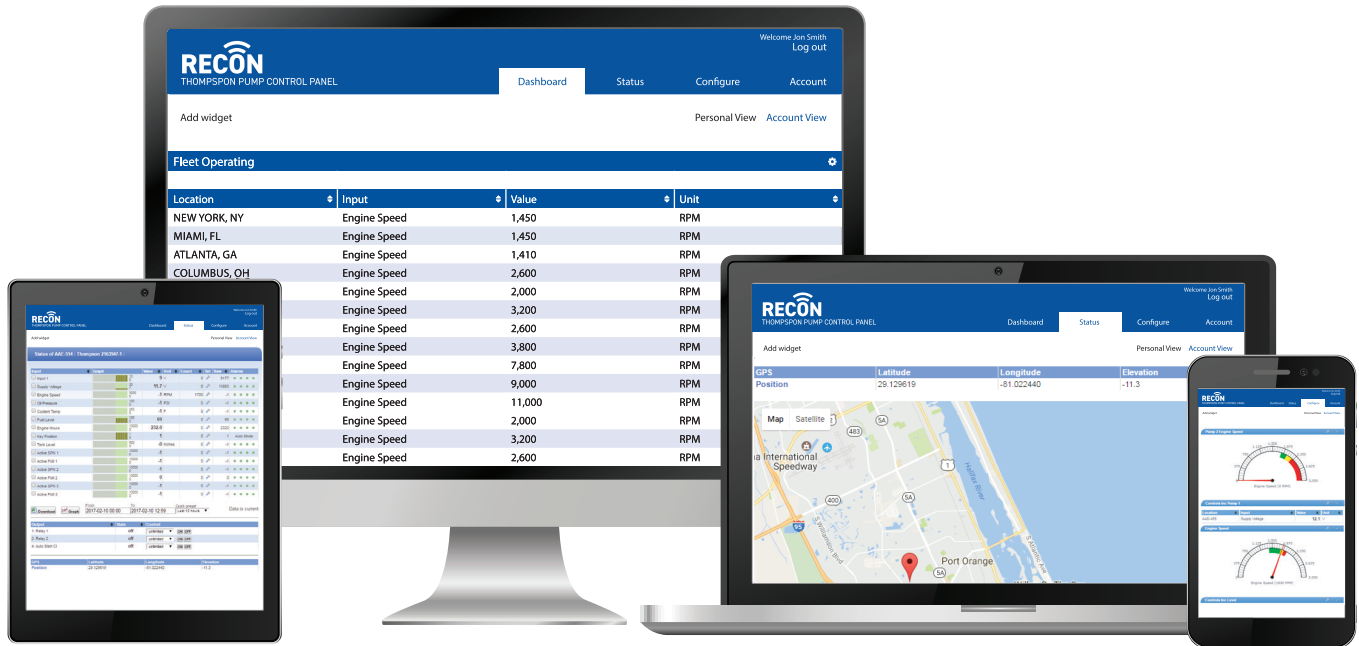


Thompson Pump **RECON** Control Panels are specifically designed and engineered to work with our complete line of dewatering pumps. Our **RECON2000** includes the following features:

- Large display, buttons and more shutdown inputs and relays than the competition
- Easily log data and hours for accurate reporting
- Notification alarm for engine off/on, and failure
- 8 Fully programmable relays and 76 selectable features, including Pump RPMs, Pump Failure, and more
- RS-485 communication ports for communication with SCADA and additional alarm equipment
- Remote operation using pressure/level transducer with backup float switch operation
- Warning alarm event history stores up to 64 events
- Can maintain flow and head parameters using pre-set engine RPM for unattended operation
- Tracks oil and filter usage with automatic alerts when replacement is recommended
- Diesel engine warm up and cool down cycle included
- Interim and Final Tier 4 diesel engine alerts with info showing level of soot in the diesel particulate filter (DPF) and if engine and/or filter needs regeneration
- Includes real-time clock with battery back-up
- Ability to monitor fault codes and warnings

RECON2000T REMOTE FEATURES

The **RECON2000T** comes with a telemetry add-on that offers enhanced functions using smart technology and can eliminate the need for on-site pump monitoring. Engine and pump data are collected and transmitted to a password protected website for viewing and reporting. The **RECON2000T** utilizes cellular and satellite networks for a secure and reliable connection in even the most remote locations. It gives operators informational access and control over the pump unit with the ability to start, stop, record data and vary speed from a remote location. The enabled website displays the information in the same familiar format, exactly as it appears on the **RECON2000T** control panel at the jobsite.



- Remotely monitor and pull reports for pump and engine performance
- Improved system performance with remote start, stop, and speed control
- Utilizes cellular and satellite data transmission for a secure, reliable communication connection
- WiFi ready and controllable via smartphone or any internet-connected device
- Digital platform ready for asset management software integration
- Automatic geofence boundary alerts with responsive tracking



2000T (ADD-ON)



EXPANDABLE I/O OPTIONS

	XCAN-IO-664	2000	2000T
RELAY OUTPUTS (6)		○	○
DIGITAL INPUT (6)		○	○
ANALOG INPUT (4)		○	○
UP TO 4 UNITS CAN BE ADDED TO A SINGLE CONTROL SYSTEM.		○	○
SCADA APPLICATIONS		○	○

This unit is used to add inputs and outputs to a 2000 and 2000 T level controller. Can be mounted internally or externally. Commonly used in SCADA applications where the control panel does not have sufficient I/O to meet the requirements.